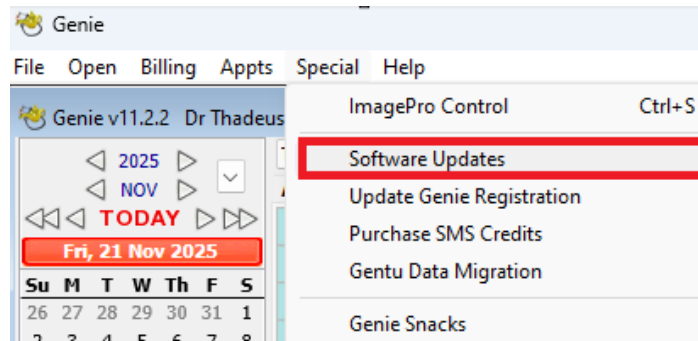


GENIE

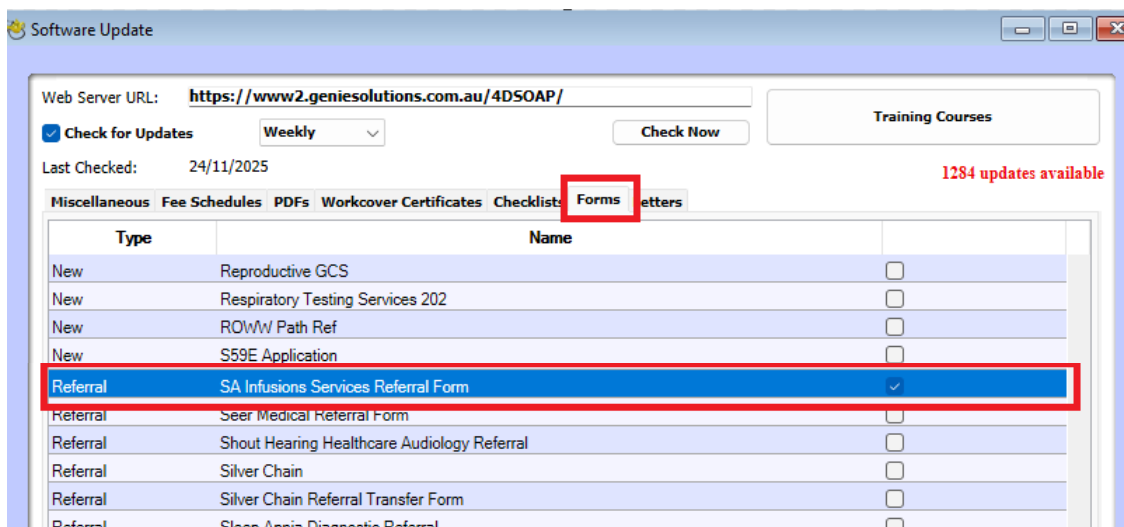
INSTRUCTIONS FOR IRON INFUSION REFERRAL FORM

SA Infusion Services is excited to announce that we have worked closely with the IT team at **Genie Clinical Software** to create a **fillable referral form which can easily be completed within Genie itself!**

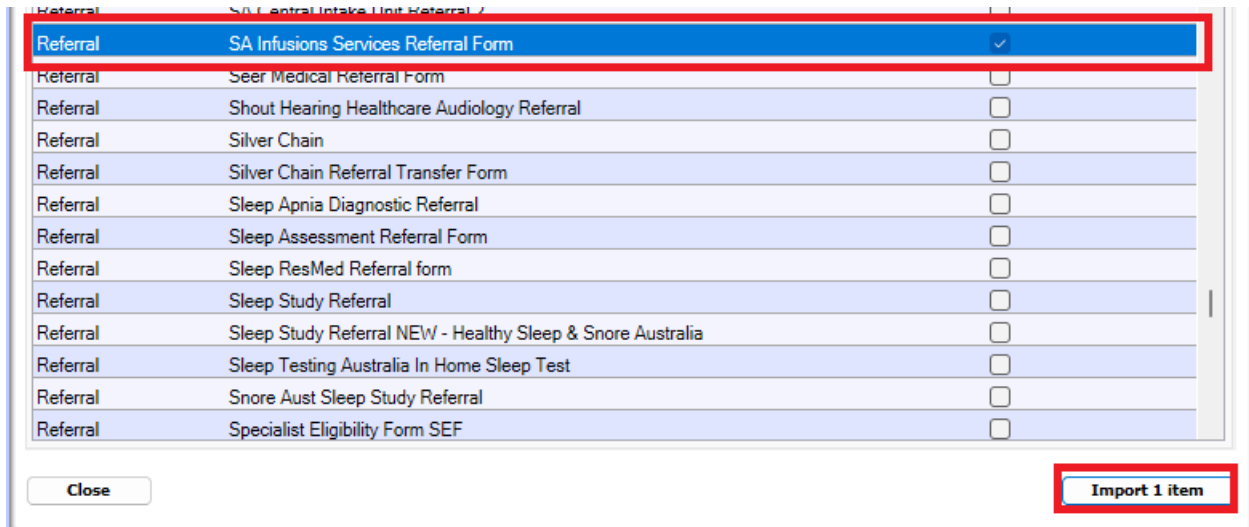
1. Within Genie, navigate to the top panel and click “Special”. In the drop-down menu that will show up, click “Software Updates”, then click “Forms” and finally click “New”



2. In this Software Updates window, scroll down to “SA Infusion Services Referral Form” and **tick the checkbox** in that row



- Once the checkbox is ticked, click the **“Import 1 item”** button at the bottom of the window



- Once you have completed and signed the SA Infusion Services Referral Form in Genie, simply attach the required blood test results & patient health summary, and email all of the documents to info@sainfusion.com.au